

# Commuter Rail Planning Update

**WESTMARC**  
**Transportation Committee**  
**May 21, 2009**



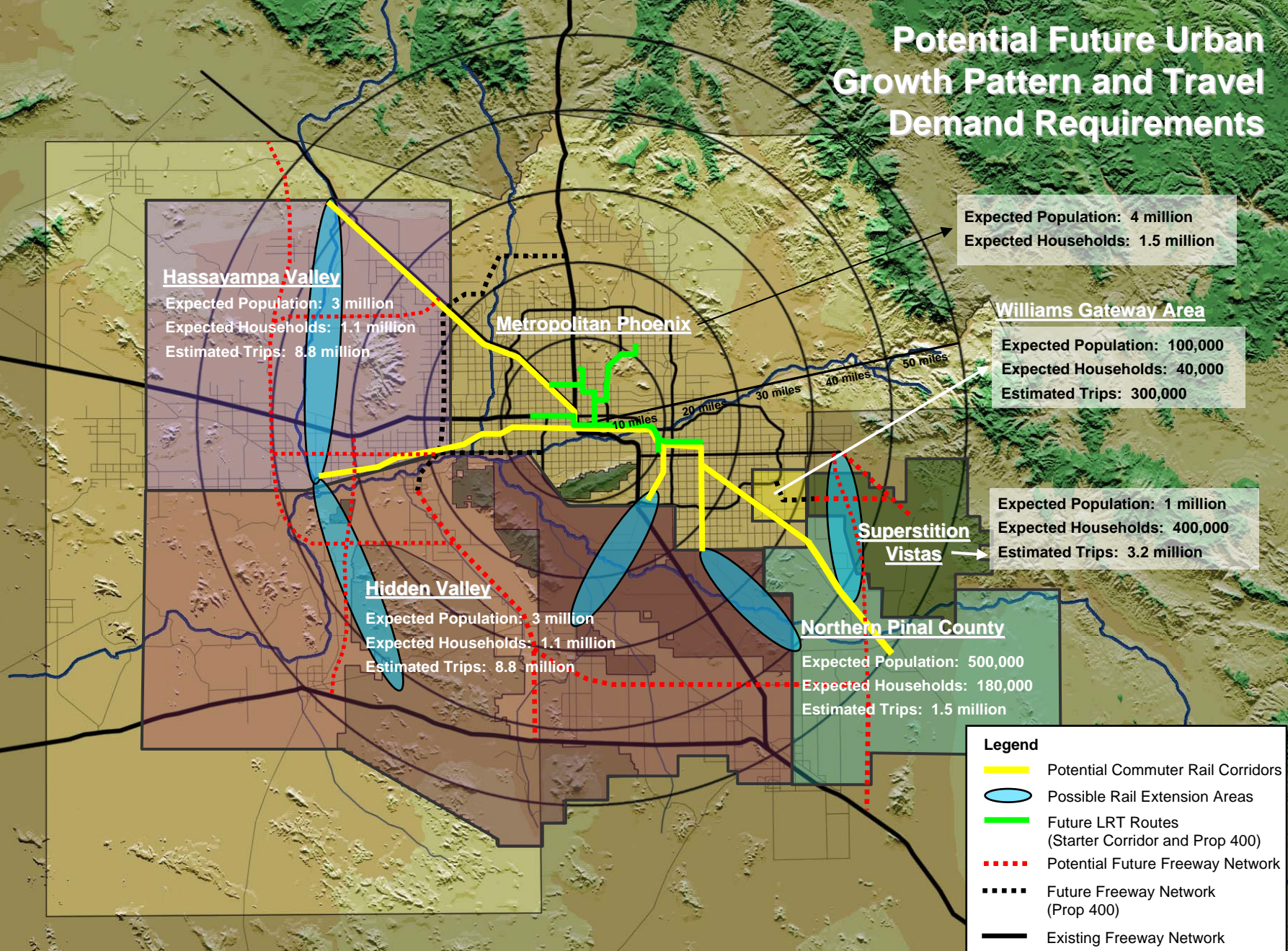


# Transit Framework Study Market Assumptions

Service Type	Purpose / Market Type	Corridor Characteristics	Mode Type
Regional Connector	Regional Access	Rural or Arterial St	Bus
Supergrid	Regional and local access	Arterial St	Bus
Express	Enhanced-speed, moderate-volume commuter or regional access	Mostly Freeway	Bus
Arterial BRT	Enhanced-speed, high-demand local or regional access	Arterial St	Bus
HCT Peak Period	Higher-speed, high-demand commuter or regional access	Dedicated Guideway	Bus or Train
HCT All Day	Higher speed, high-demand regional access	Dedicated Guideway	Bus or Train



# Potential Future Urban Growth Pattern and Travel Demand Requirements



**Hassayampa Valley**  
 Expected Population: 3 million  
 Expected Households: 1.1 million  
 Estimated Trips: 8.8 million

**Metropolitan Phoenix**

Expected Population: 4 million  
 Expected Households: 1.5 million

**Williams Gateway Area**  
 Expected Population: 100,000  
 Expected Households: 40,000  
 Estimated Trips: 300,000

**Hidden Valley**  
 Expected Population: 3 million  
 Expected Households: 1.1 million  
 Estimated Trips: 8.8 million

Expected Population: 1 million  
 Expected Households: 400,000  
 Estimated Trips: 3.2 million

**Superstition Vistas**

**Northern Pinal County**  
 Expected Population: 500,000  
 Expected Households: 180,000  
 Estimated Trips: 1.5 million

**Legend**

- Potential Commuter Rail Corridors
- Possible Rail Extension Areas
- Future LRT Routes (Starter Corridor and Prop 400)
- - - - Potential Future Freeway Network
- - - - Future Freeway Network (Prop 400)
- Existing Freeway Network



# Comparison of Peer Regions 2006 NTD Operating Costs

Region	Total Operating Expenses	Operating Expense per Capita	COLI*
Atlanta	\$331,704,840	\$81.88	96.1
Dallas	\$399,393,985	\$83.05	91.2
Denver	\$320,088,805	\$138.21	103.4
Salt Lake City	\$136,824,236	\$144.79	100.7
San Diego	\$264,244,089	\$97.08	139.5
Seattle	\$848,865,748	\$295.26	121.0
Average	\$383,520,284	<b>\$129.87</b>	---
Phoenix	\$229,507,781	<b>\$71.10</b>	100.6

\* 2007 Composite Cost of Living Index



# Transit Mobility Scenarios Financial Assumptions

Program	Summary	Assumed Revenue (Billions \$)
Prop. 400	Transit portion of 20 year regional sales tax (Sept. '08 Forecast)	4.2
Scenario 1 Basic Mobility	Assumes extending existing local and regional revenues by four years to 2030	1.2
Scenario 2 Enhanced Mobility	Assumes new revenues for 2015 to 2030 period (investment level comparable to 2006 peer region average)	6-7
Scenario 3 Transit Choice	Assumes new revenues for 2015 to 2030 period (investment level comparable to 2006 Seattle average)	14-15



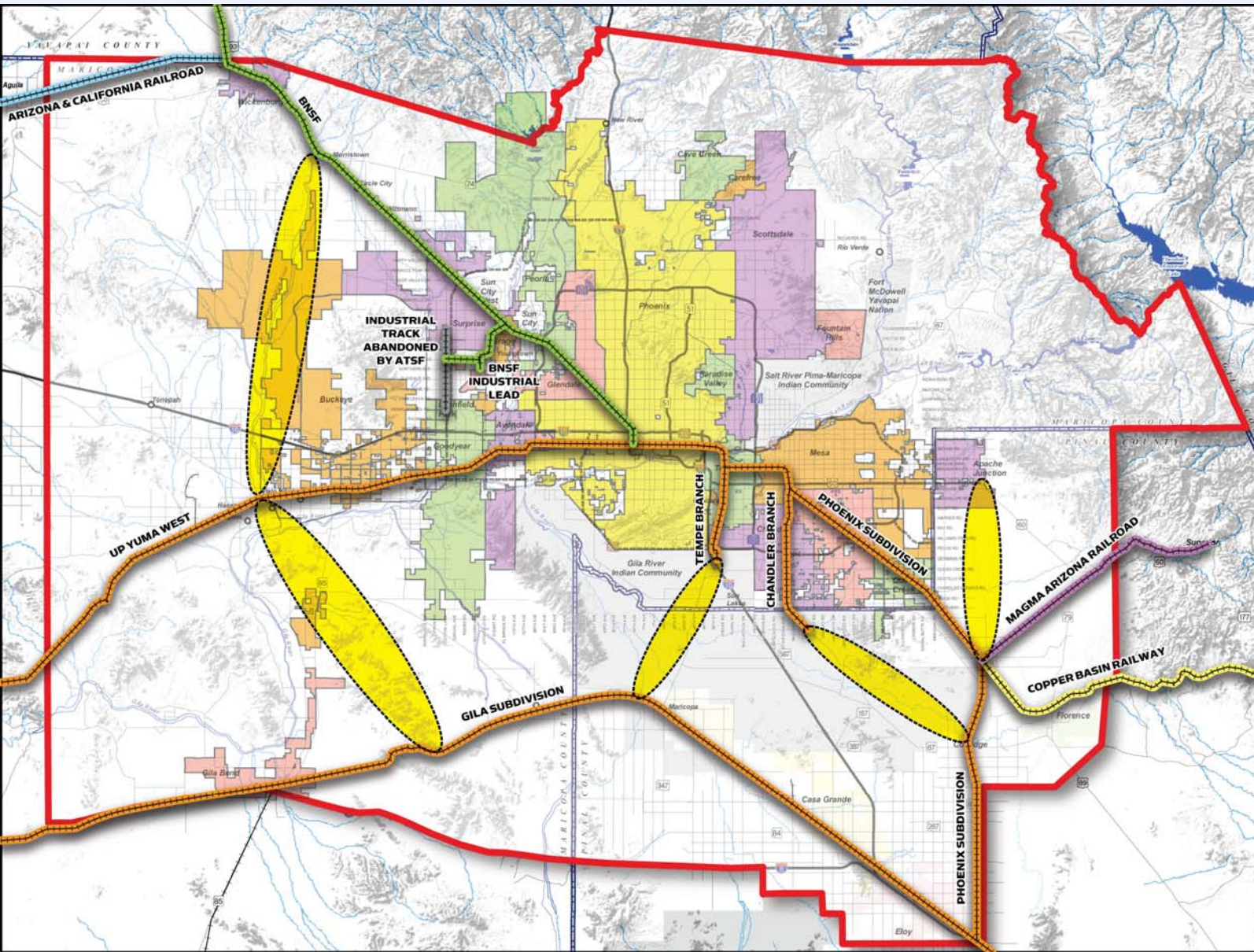
# Commuter Rail



# North American Commuter Rail Systems



- "Heritage" Systems (Pre-1985)
- "New" Systems (Since 1985)
- Open by 2010
- In design or planning



### MAG COMMUTER RAIL STRATEGIC PLAN

### EXISTING RAILROADS & POSSIBLE EXTENSIONS

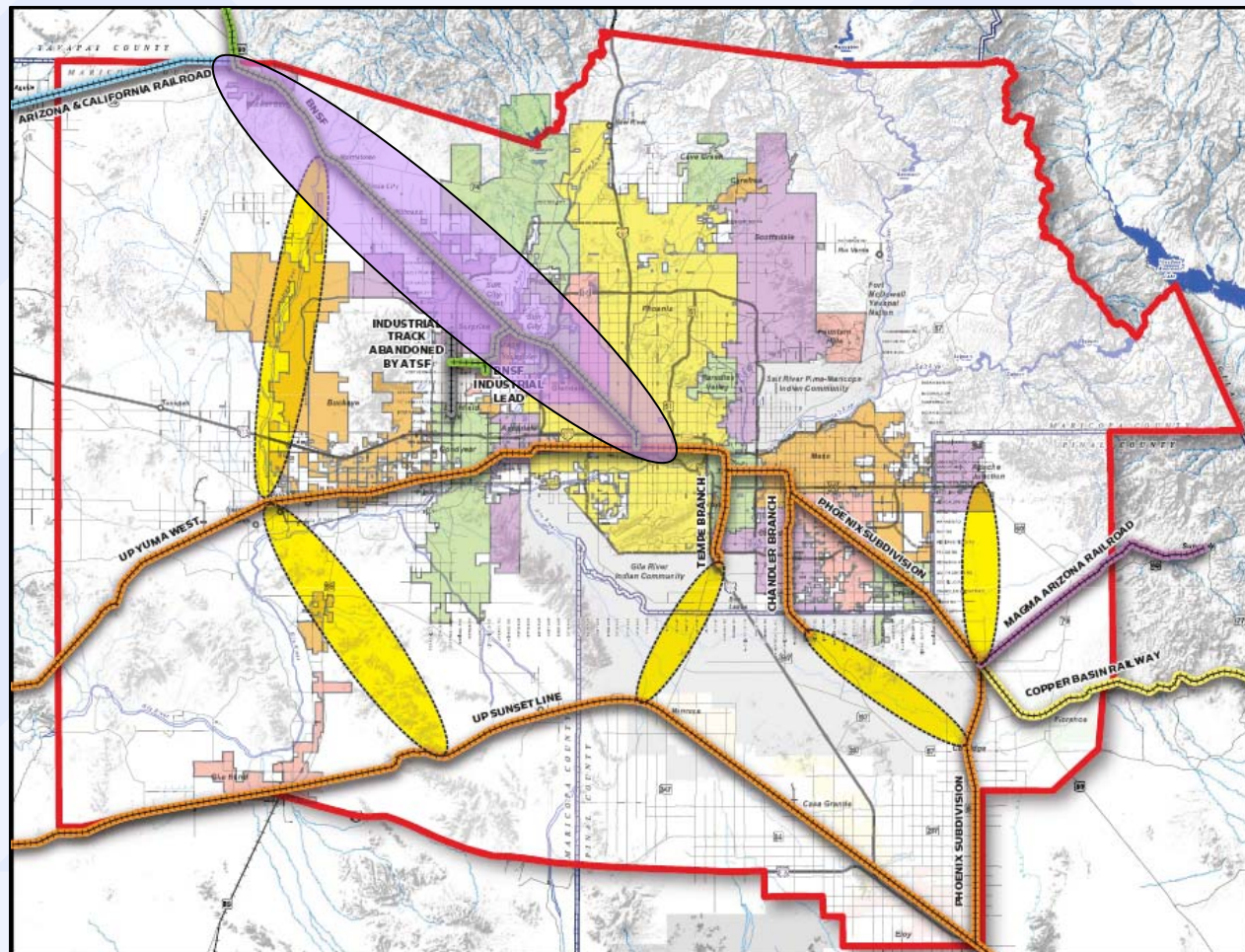
- Legend**
- BNSF
  - UP Mainline
  - Magma Arizona Railroad
  - Copper Basin Railway
  - Arizona & California Railroad (AZRC) (since 1991)
  - Industrial track abandoned by ATSF (early 1990s)
  - Possible rail extension areas
  - Commuter Rail Study Area

N

Source: URS Date: Jan. 2008



# Grand Avenue Corridor Development Plan



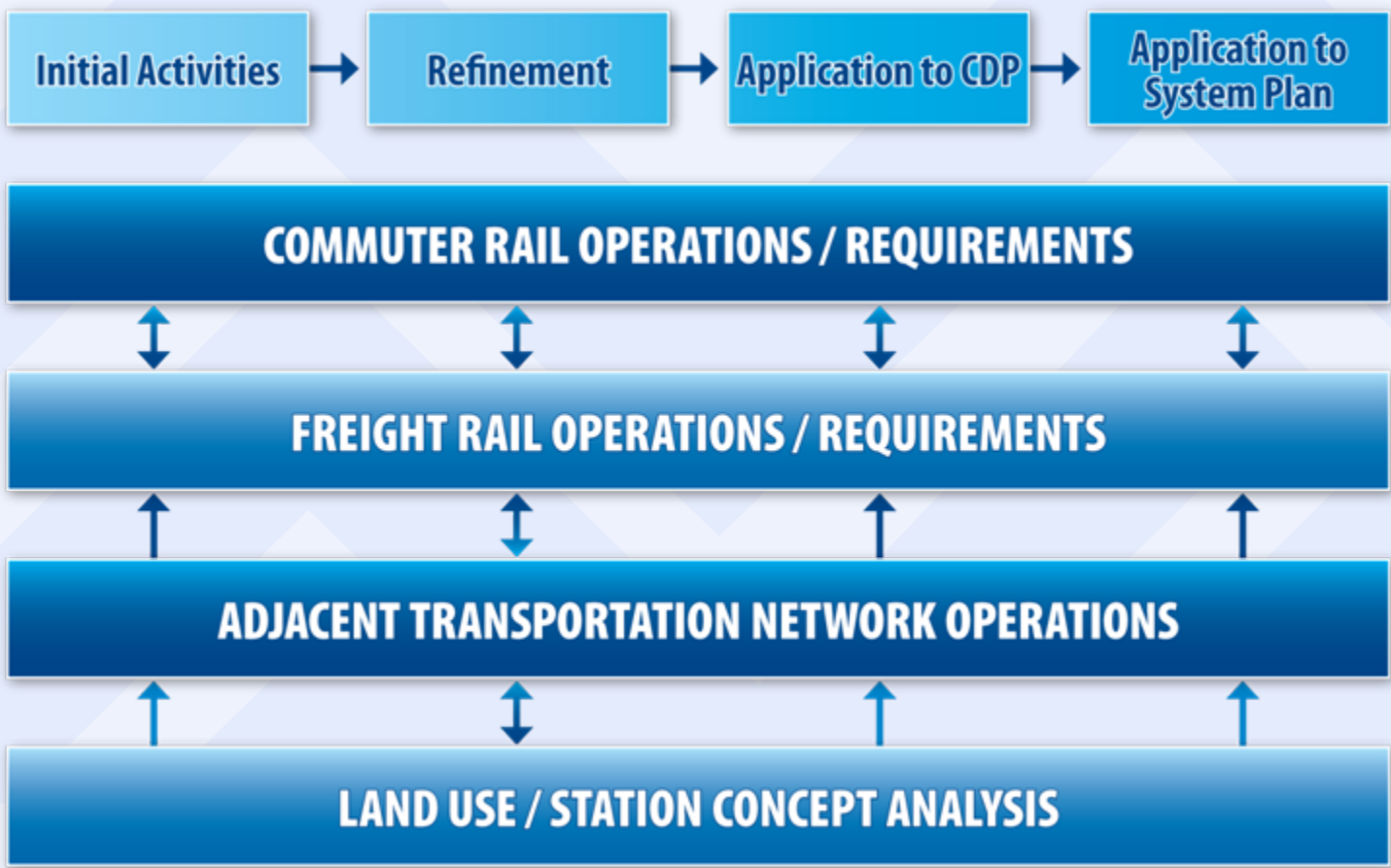


# Grand Avenue Commuter Rail Corridor Dev. Plan

- Action Step identified in Strategic Plan
- Study process launched in November 2008
- Study area is downtown Phoenix to Wickenburg (BNSF corridor)
- Focus on developing a phased implementation plan
- Evaluation of passenger rail, freight rail, and roadway traffic



# Grand Avenue – Key Elements



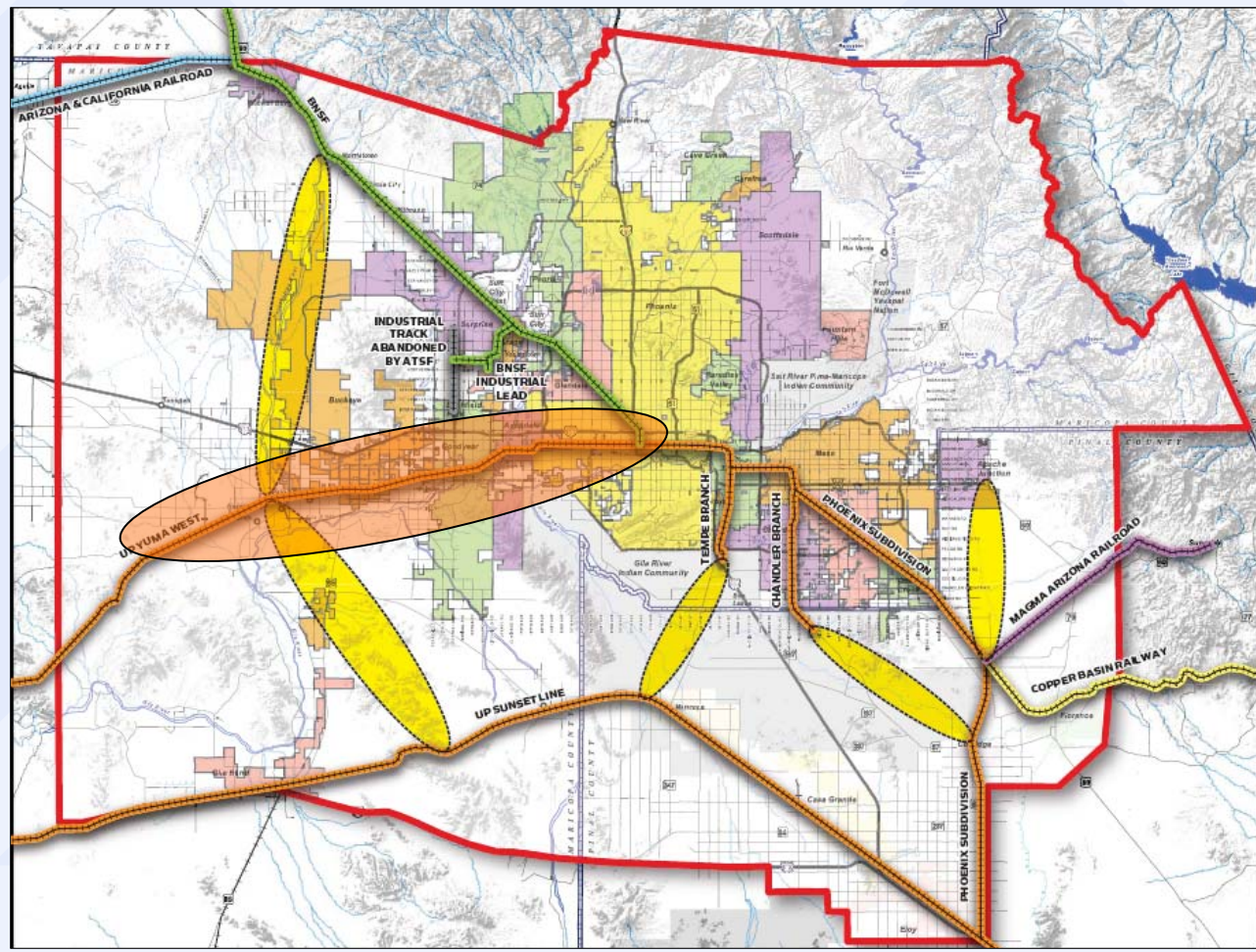


## Current Activities

- Corridor inventory and evaluation
- Conceptual operating plans
- Collaboration with BNSF Railway
- Station area concepts



# Yuma West Corridor Development Plan





# UP Yuma West Commuter Rail Corridor Dev. Plan

- Project added to MAG work program in January 2009
- Study area is downtown Phoenix Buckeye
- Focus on developing a phased implementation plan
- Evaluation of passenger rail, freight rail, and roadway traffic

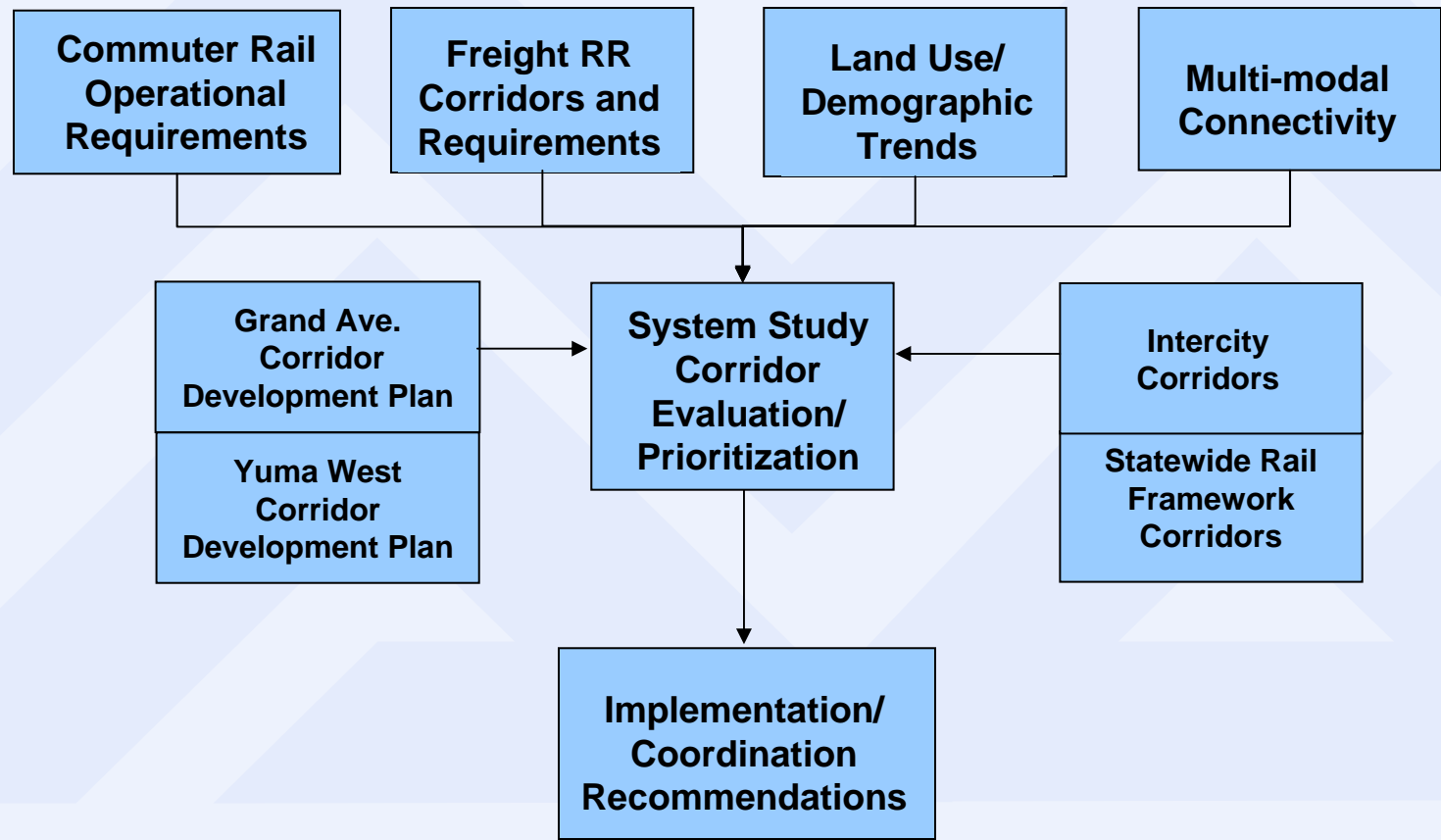


# Commuter Rail System Study

- Project added to MAG work program in January 2009
- Evaluate existing freight corridors and possible extensions
- **Prioritize implementation of commuter rail service through evaluation of:**
  - Ridership Potential
  - Operating Strategies
  - Capital and Operating Costs
- **System study may recommend:**
  - Additional corridor development plans (2010)
  - More detailed study of Grand Avenue and/or Yuma West

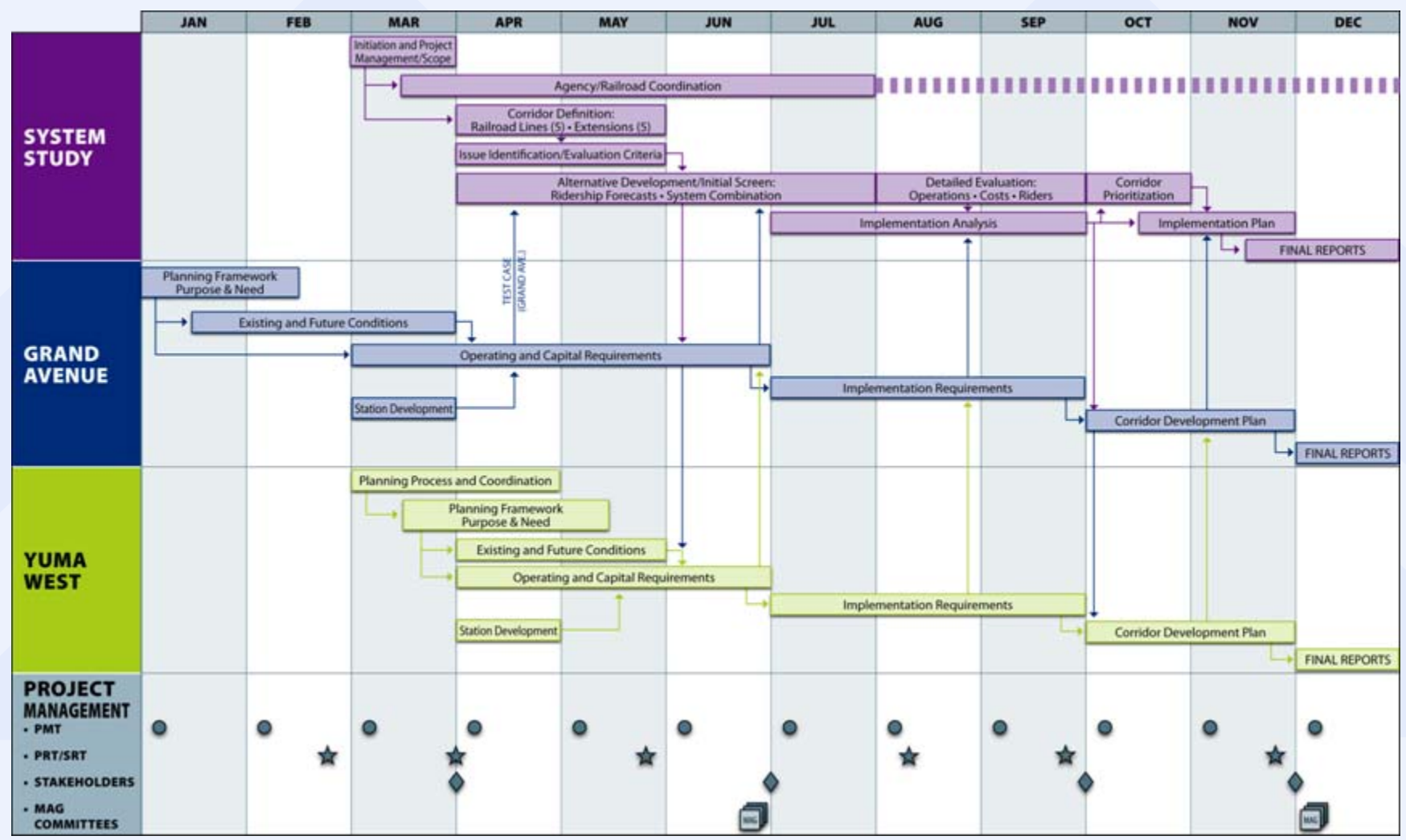


# System Study-Key Elements





# Schedule





# Closing Thoughts

## On a national scale

- Other metropolitan areas are investing much more in transit than we are
- Federal reauthorization will likely include new requirements for sustainability and the environment
- Emerging federal priority for passenger rail service—\$8 billion in stimulus bill
- What happens in the next 50 years will be very different from the previous 50 years

## On an international scale

- International competitors are investing in high speed rail systems...Asia, Europe, South America
- China will spend over \$250 billion on rail by 2020, including 7,200 miles of high speed rail

# Commuter Rail Planning Update

**WESTMARC**  
**Transportation Committee**  
**May 21, 2009**

